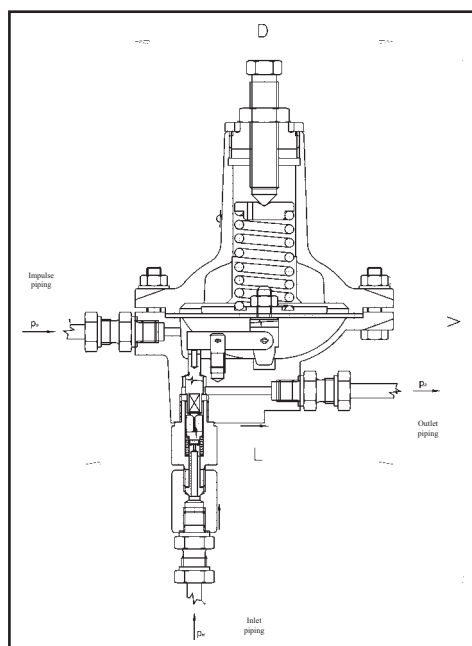


## PRESSURE REGULATOR - DIRECT ACTING



### USE

This regulator is a so called direct action regulator, and is intended for a rough regulation of the gas pressure being supplied from a high pressure or a very high pressure gas distribution network directly to the consumer. The regulator is suitable for natural gas and all noncorrosive gaseous media. Required gas filtration: 5 µm.

### PRESSURE RANGES

Inlet pressure range  $p_e$  = 1,50 to 6,3 MPa

Outlet pressure range  $p_a$  = 0,2 MPa.

### TYP / DN / PN / TEMPERATURE RANGE

RT 257 763 DN 6 PN 63 -10 °C to 70 °C

### MATERIAL

	RT 257 763
Valve body, seat, cone	BRASS
Diaphragm cover	ALUMINIUM ALLOY
Cone sealing	NITRIL RUBBER
Sealing rings	NITRIL RUBBER
Diaphragm	NITRIL RUBBER REINFORCED WITH CLOTH

### PRECISION CATEGORIES

ACCURACY CLASS	CLOSING PRESSURE CLASS
AC 15	SG 30

### NOTE

Take into account comments of the installation of gas pressure regulators (page 4).

### INSTALLATION

The regulator is to be installed in the pipeline in a position allowing the axis of the upper aluminium cover to be in vertical position with the screw on the top. The inlet of working fluid must comply with the arrow shown on the regulator body. The inlet and outlet piping must not transfer any additional stress to the regulator. The regulator must not be exposed to any additional bending stress, e.g. when mounting the regulator to the bracket. The regulator is connected to the pipeline 8 x 1 by means of muff couplings DN6.

### DIMENSION TABLE

DN	D	L	V
6	145	175	300